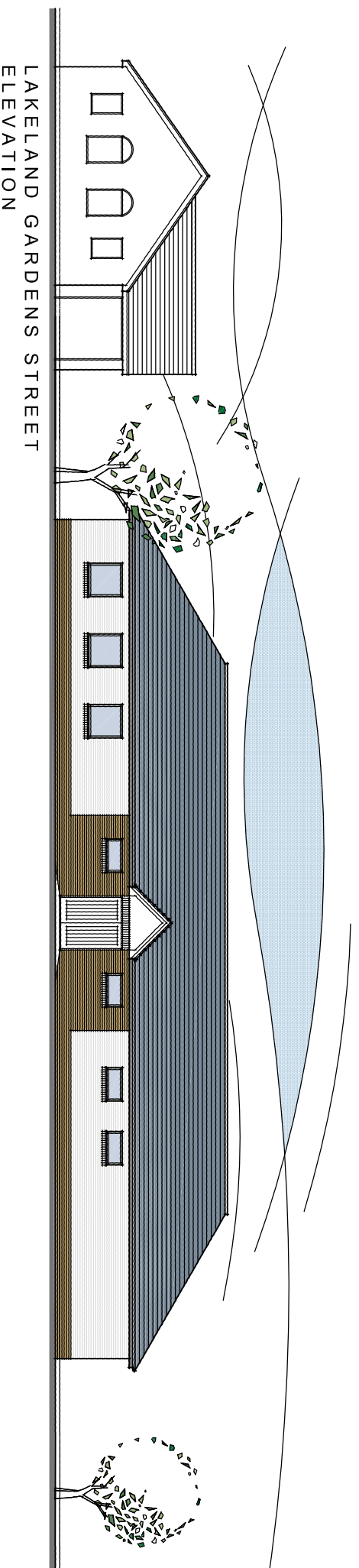


GROUND FLOOR PLAN



Floor Area Schedule

Main Hall -	78.6m ²
Store Room 1 -	5.6m ²
Store Room 2 -	5.5m ²
Kitchen -	8m ²
Office -	7.2m ²
Meeting Room -	23m ²
Entrance Hall -	19.7m ²
Dis. WC -	3.3m ²
Male WC -	9.2m ²
Female WC -	11.8m ²
Female Change/WC -	20.2m ²
Male Change/WC -	18.8m ²
Female Dis. wc -	5.9m ²
Male Dis. wc -	6.2m ²
Ref. change/wc -	6.5m ²
Plant -	3.2m ²
Store 3 -	5.7m ²
Change/access -	5m ²

Total Area - 243.4 m²



mimir
ARCHITECTURE

www.mimiararchitecture.com
The Polygon, 2 Stamford Road, Bowdon, Cheshire, WA14 2JU
T: 0353 123 5115 e: info@mimiararchitecture.com
Company Reg No. 7241272

Project: **Gilibrands Community Centre**

Client: **Redrow - Taylor Wimpey**

Drawing Title: **Proposed Ground Floor Plan**

Project No.	Drawing No.	Scale.	Revision.	Date.
0162	02	1:100	-	NOV 11

3a Burnett Street, Little Germany, Bradford
BD1 5AP
T: 0353 123 5115